



2016 Australian Laser Masters Championship

12th February 2016 to 15th February 2016

SAILING INSTRUCTIONS

Organising Authority

*NSW/ACT District Laser Association
on behalf of
Australian Laser Class Association*

Hosted by

Port Stephens Sailing and Aquatic Club

Sponsored by



2016 Australian Laser Masters Championship | 12 to 15 February 2016

SAILING INSTRUCTIONS

1. RULES

- 1.1. The Regatta will be governed by the rules as defined in the [Racing Rules of Sailing](#) (RRS).
- 1.2. The Yachting Australia [Prescriptions](#) and [Special Regulations](#) shall apply.

2. NOTICES TO COMPETITORS

Notices to Competitors will be posted to the official regatta noticeboard located in the upstairs entrance foyer to the Port Stephens Sailing and Aquatic Club (PSSAC) clubhouse. They may, also, be posted to the regatta website www.lasermasters.org.au

3. CHANGES TO SAILING INSTRUCTIONS

Any change to the Sailing Instructions will be posted on the official notice board at least one hour before the scheduled start of the first race of a session, except that any change in the Schedule of Races will be posted by 1830 on the day before it will take effect.

4. SIGNALS MADE ASHORE

- 4.1. Signals made ashore will be displayed from the official signal mast located on the eastern upstairs veranda of PSSAC.
- 4.2. When flag AP is displayed ashore, '1 minute' is replaced with 'not less than 30 minutes' in the race signal AP. This changes Race Signal AP.

5. SCHEDULE OF RACES

5.1. Regatta Schedule

Friday 12 Feb	0900 to 1230	Registration
Friday 12 Feb	1100	Competitor briefing at PSSAC
Friday 12 Feb	1300	First Warning Signal. Two races
Saturday 13 Feb	1230	First Warning Signal. Three races
Sunday 14 Feb	1230	First Warning Signal. Three races
Monday 15 Feb	1100	First Warning Signal. Two races

- 5.2. The times of the first Warning Signal are shown in Instruction 5.1. Subsequent races in a session will be started as soon as possible after the last boat of the class or fleet finishes.
- 5.3. Additional races may be sailed in any session provided that no class or fleet becomes more than one race ahead of schedule.
- 5.4. Ten races are scheduled for the Championship.
- 5.5. No Warning Signal shall be made after 1500 Monday 15 February 2016.

6. CLASS FLAGS

- 6.1. The Laser Standard class flag will be a white flag with a red Laser emblem.
- 6.2. The Laser Radial class flag will be a green flag with a red Laser emblem.
- 6.3. The Laser 4.7 class flag will be a yellow flag with a red Laser emblem.
- 6.4. Divisions will be as per the Notice of Race Clause 6.

- 6.5. It is the Race Committee's intention to provide the most competitive racing format and this may mean dividing the classes into fleets. If this occurs the fleet compositions will be advised at the competitor briefing Friday 12 February and on a Notice to Competitors posted the same day. If the classes are divided into fleets the fleets will be identified by numerals and the fleet flag will be the Class flag in conjunction with the fleet numeral pennant.

As an example, based on current entry projections, the division of the classes could be: the Laser Radial Apprentice Masters and Grand Masters sail together as one fleet under Radial class flag and numeral pennant one; the Laser Radial Masters and Great Grand Masters sail together as one fleet under Radial class flag and numeral pennant two; the Laser Standard Apprentice Masters and Masters sail together as one fleet under the Standard class flag and numeral pennant one and the Laser Standard Grand Masters, Great Grand Masters and Laser 4.7's sail together as one fleet under the Standard class flag and numeral pennant two. .

7. DIVISION IDENTIFICATION

While racing each Laser shall display a coloured band, issued at registration, corresponding to the boat's Division and for the 4.7's Rig. The band shall be placed on the mast bottom section between the vang fitting and the boom. Division colours are:

- Apprentice Masters - Red
- Masters - White
- Grand Masters - Blue
- Great Grand Masters - Yellow
- 4.7 - Orange

8. RACING AREA

The racing area will be the waters of Port Stephens east of Soldiers Point. The racing area is shown at Attachment 1.

9. THE COURSES

- 9.1. Attachment 2 shows the course configurations, including the approximate angles between the legs, the order in which marks are to be passed and the side on which each mark is to be left.
- 9.2. The course designator will be displayed, as an alpha-numeric, on a board on the stern of the Committee Vessel at the starboard end of the Start Line before or with the display of the Warning Signal.

10. THE MARKS

- 10.1. Marks 1, 4S and 4P will be yellow cones.
- 10.2. Mark 1A will be a lime green sphere.
- 10.3. Marks 2, 3S and 3P will be orange cones.
- 10.4. Mark 5 will be a red sphere.
- 10.5. The Start Mark will be a boat displaying an orange flag or a danbuoy with an orange flag.
- 10.6. The Finish Mark will be a danbuoy with a blue flag.
- 10.7. A race committee boat signalling a change of a leg of the course is a mark as provided in Instruction 13.2.

11. AREAS THAT ARE OBSTRUCTIONS

- 11.1. Boats are not required to comply with navigation marks when racing.
- 11.2. Attention is drawn to the RMS NSW Maritime regulation where no racing vessel shall sail on the shoreward side of any permanent mooring.

12. THE START

- 12.1. The starting line will be between a staff displaying an orange flag on the Committee Vessel at the starboard end and Start Mark at the port end. If a pin boat is used as the Start Mark, the port end of the line will be the staff on the boat displaying the orange flag.
- 12.2. Boats whose warning signal has not been made shall avoid the starting area during the starting sequence for other races.
- 12.3. A boat starting later than 4 minutes after her starting signal shall be scored Did Not Start without a hearing. This changes rule A4.
- 12.4. If Flag U has been displayed as the Preparatory Signal no part of a boat's hull, crew or equipment shall be in the triangle formed by the ends of the starting line and Mark One during the last minute before the starting signal. If a boat breaks this rule and is identified she shall be disqualified without a hearing, but not if the race is restarted or resailed or postponed or abandoned before the starting signal. This changes rule 26.

13. CHANGE THE NEXT LEG OF THE COURSE

- 13.1. To change the next leg of the course the Race Committee will move the original mark (or the finish line) to a new position.
- 13.2. Except at a gate, boats shall pass between the race committee boat signalling the change of the next leg and the nearby mark, leaving the mark to port and the race committee boat to starboard. This changes rule 28.

14. THE FINISH

- 14.1. The finishing line will be between a staff displaying an orange flag on the Committee Vessel at the starboard end and the course side of the port end finishing mark.
- 14.2. After finishing, boats shall keep clear of the finishing line.

15. PENALTY SYSTEM

The Protest Committee may go on the water and to encourage boats to take penalties afloat jury members will blow a whistle when they see what they believe to be a breach of a rule.

16. TIME LIMITS

- 16.1. The time limit for the first boat in a fleet to finish will be 80 minutes.
- 16.2. Boats failing to finish within twenty minutes after the first boat in the fleet sails the course and finishes will be scored Did Not Finish without a hearing. This changes rules 35 and A4 and A5.

17. ARBITRATION

- 17.1. Rule 44.1 is changed to permit a boat that has broken a rule of Part 2, Part 4 or rule 31 to take a penalty after racing but prior to any protest hearing. Her penalty shall be a scoring penalty equal to a finishing place mid-way between the boat's actual finishing place and the score for a disqualification. Half points shall be disregarded and the points of other

- boats shall not be adjusted. Rule 63 is changed such that an arbitrator may allow a protest to be withdrawn.
- 17.2. An arbitration hearing will be conducted for all protests lodged in accordance with rule 61 which allege an infringement of a rule of Part 2, Part 4 or rule 31. Such hearings will be held subsequent to the protest being lodged and prior to the protest hearing.
- 17.3. The time and place of the arbitration hearing will be decided by the arbitrator and such advice may be given verbally. One representative of each boat will attend the arbitration hearing and no witnesses will be allowed. The arbitrator will decide the manner in which testimony is given.
- 17.4. After taking testimony, the arbitrator will make one of the following conclusions:
- a. The protest does not comply with rule 61 and the protestor should withdraw the protest.
 - b. The matter shall proceed to a protest hearing. This may be because rules not suited to arbitration may be involved or because evidence is too complex or divergent or because injury, serious damage or a significant advantage may have occurred or because of the apparent severity of the alleged infringement or for any other reason decided by the arbitrator.
 - c. No rule was broken and the protestor should withdraw the protest.
 - d. A rule was broken by one or more of the boats involved, the infringing boat(s) may accept a scoring penalty as detailed in SI 18.1 and if so accepted, the protestor should withdraw the protest.
- 17.5. An arbitration hearing shall not be re-opened. No conclusion of an arbitrator shall be subject to appeal or be grounds for redress.
- 17.6. Should the protest proceed to a protest hearing then the arbitrator may be a member of the Protest Committee. Any evidence given by an arbitrator during a protest hearing shall be given only in the presence of the parties to the hearing.
- 18. PROTESTS AND REQUESTS FOR REDRESS**
- 18.1. Protests forms are available at the race office. Protests and requests for redress or reopening shall be delivered to the Race Office within the protest time limit.
- 18.2. For each fleet, the protest time limit is 60 minutes after the first boat of that fleet finishes the last race of each session.
- 18.3. Jury notices will be posted within 30 minutes after the protest time limit to inform competitors of the time and location of a hearing to which they are a party.
- 18.4. On the last day of racing, a request to reopen a hearing shall be delivered:
- a. within the protest time limit if the party requesting the reopening was informed of the decision on the previous day;
 - b. no later than 30 minutes after the party requesting reopening was informed of the decision on that day.
- This changes rule 66.
- 18.5. Breaches of Instructions 12.2 (keep clear of starting line unless starting), 20 (Safety Regulations), 14.2 (keep clear of finishing line after finishing), 22 (Advertising), 23 (Support Boats), 24 (Rubbish Disposal), and 25 (Radio Communications) shall not be grounds for a protest by a boat. This changes rule 60.1(a). Penalties for these breaches may be less than disqualification if the Protest Committee so decides.

19. SCORING

- 19.1. All Age Division points will be awarded based on the placing of competitors in their age division in each race.
- 19.2. Ten races are scheduled of which four shall be completed to constitute a series.
- 19.3. When fewer than five races have been completed, a boat's series score will be the total of all her race scores.
- 19.4. When five to eight races have been completed, a boat's series score will be the total of all her race scores excluding her worst race score.
- 19.5. When nine races or more have been completed, a boat's series score will be the total of all her race scores excluding her two worst scores.

20. REPLACEMENT OF COMPETITORS AND EQUIPMENT

- 20.1. Substitution of competitors will not be allowed.
- 20.2. Substitution of damaged or lost equipment will not be allowed unless authorized in writing by the race committee. Requests for substitution shall be made to the Race Committee in writing at the first reasonable opportunity and the damaged equipment and its replacement shall be submitted for inspection.
- 20.3. Where equipment is to be replaced between racing sessions, requests shall be submitted at least 50 minutes prior to the start time of the next scheduled racing session.
- 20.4. Where equipment is to be replaced between races within a session, requests shall be submitted before the end of protest time for the races in which the replacement equipment was used.

21. EQUIPMENT AND MEASUREMENT CHECKS

- 21.1. For the duration of the regatta, each competitor shall use only one hull, sail, mast, boom, centreboard and rudder.
- 21.2. The boats of female competitors shall carry a Red Rhombus on their sail in accordance with ILCA rule 4.g.
- 21.3. It is each competitor's responsibility to ensure that his/her boat and equipment complies with the ILCA rules and the Yachting Australia Special Regulations.
- 21.4. The Organising Authority may inspect any boat at any time during the regatta. Any competitor's boat which fails an inspection may be disqualified from all races prior to such inspection.

22. ADVERTISING

Boats shall display advertising when supplied by the Organising Authority.

23. SUPPORT BOATS

Support vessels/boats carrying team leaders, coaches and other support personnel shall not be within 100m of boats racing from the time of the Preparatory Signal for the first fleet to start until all boats have finished or until the Race Committee signals a postponement, general recall, or abandonment, unless prior approval has been given by the Race Officer.

24. RUBBISH DISPOSAL

No rubbish is to be dumped into the water. All rubbish is to be handed to official boats or taken ashore.

25. RADIO COMMUNICATIONS

A boat shall neither make radio transmissions while racing nor receive radio communications not available to all boats. Mobile phones or similar devices are prohibited.

26. SAFETY REGULATIONS

- 26.1. All skippers shall sign on prior to going afloat for racing in any session.
- 26.2. All skippers shall sign off within the protest time limit.
- 26.3. Boats failing to comply with Instructions 26.1, 26.2 and 26.4 shall receive a five point penalty (but no boat is to be scored worse than DSQ) in the race held closest to the indiscretion without a hearing. This changes Appendix A 4.2
- 26.4. Two sign on and off systems will be employed. Sailors will use one of either:
 - a. An electronic system will be employed. Sailors choosing to use this system will be issued wristbands at registration which register on a computer terminal when passed in front of the terminal. A registered sailor is responsible for their wristband during the regatta and shall relinquish and return their wristband to the Race Office after the final race session is completed. Failing to return the wristband will be penalised according to Instruction 26.3.
 - b. An SMS system will be employed. The SMS number is 0477 647 537. Sailors using this system must sign on and off to this number. No acknowledgement will be made of receipt. The SMS shall contain the sail number and the words "sign on" or "sign off". Multiple boats may be included on an SMS, noting that the sender takes responsibility for the accuracy of the SMS.
- 26.5. A skipper who retires from a race shall notify a race committee or safety/patrol boat as soon as possible and the race office immediately after returning to the shore.

27. PRIZES

- 27.1. Laser class cubes and prizes shall be awarded in accordance with the ILCA bylaws. However, the number of prizes allocated in any division shall depend on the number of entries. A minimum of five (5) entries is required to constitute a division.
- 27.2. Laser class cubes and other prizes will be awarded regardless of the competitor's nationality or country of residence.
- 27.3. Other prizes may be awarded at the discretion of the Organising Authority.

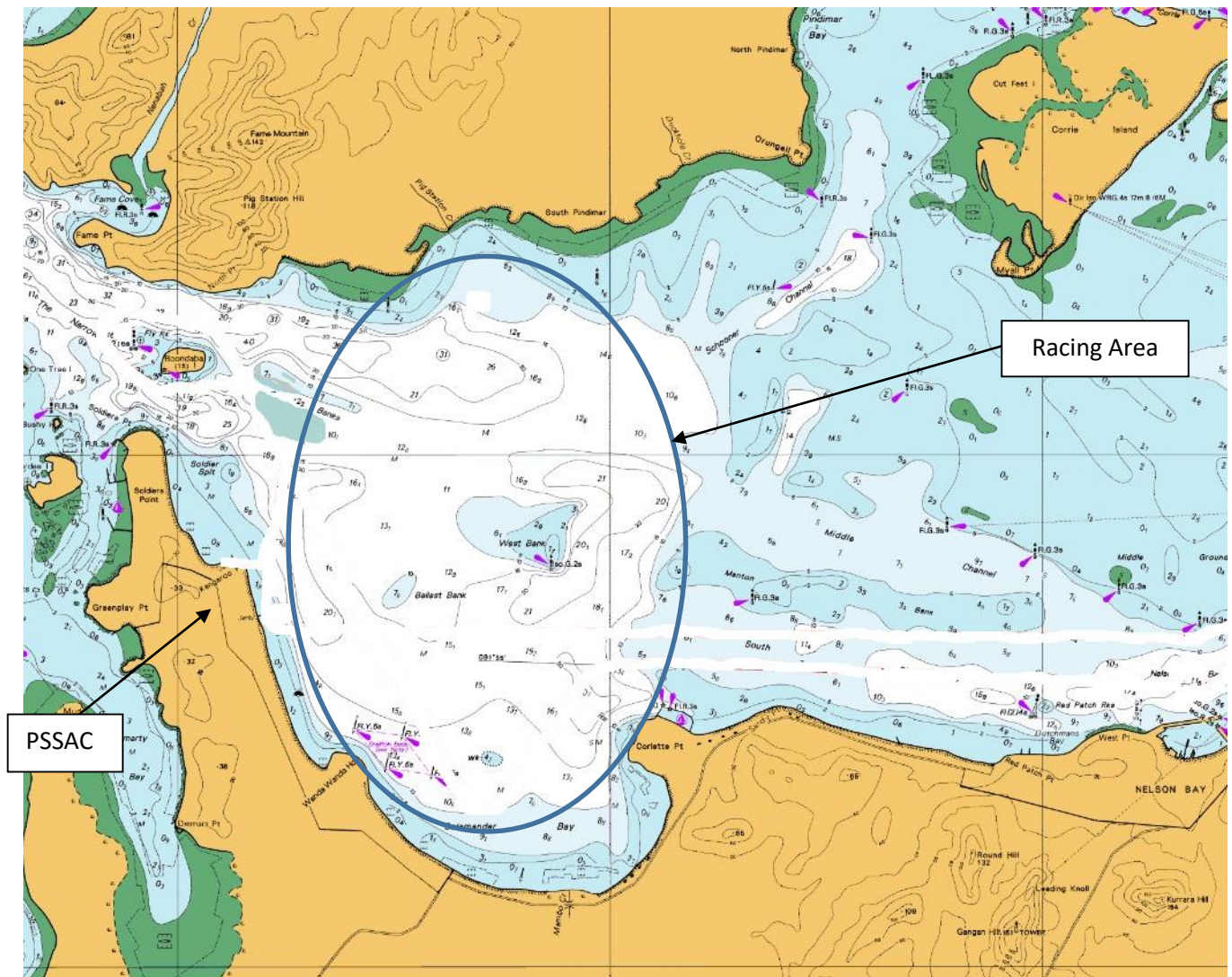
28. DISCLAIMER OF LIABILITY

- 29. Competitors participate in the regatta entirely at their own risk. See rule 4, Decision to Race. The Organising Authority will not accept any liability for material damage or personal injury or death sustained in conjunction with or prior to, during, or after the regatta. Attention is drawn to Notice of Race Clauses 16 and 17.

30. INSURANCE

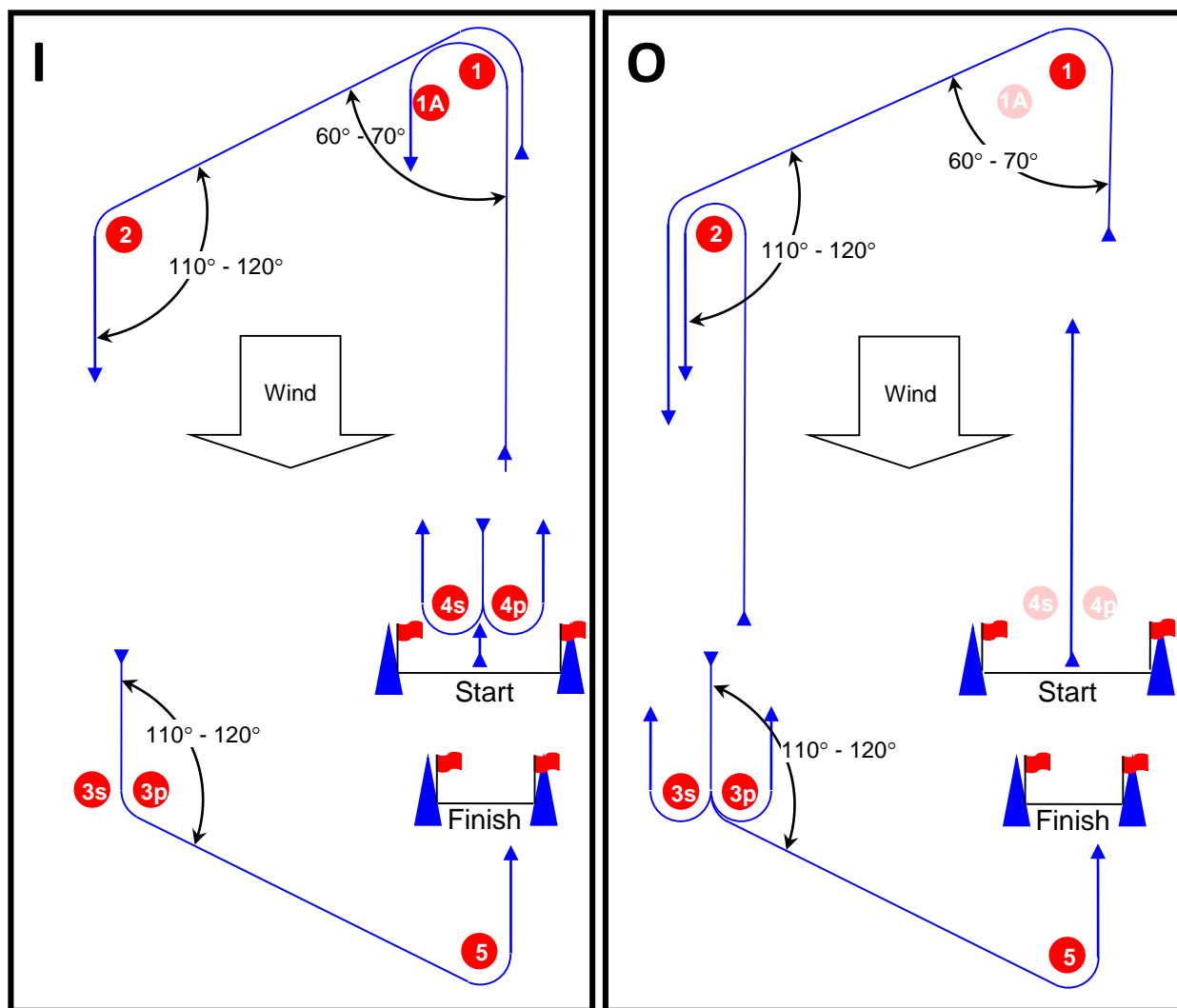
All competitors must have a valid third party insurance policy with a minimum cover of AUD\$10,000,000 whilst racing. Signing the entry and declaration form confirms currency of this insurance.

**Attachment 1 to
2016 Laser Masters Championship
Sailing Instructions
Racing Area**



**Attachment 2 to
2016 Laser Masters Championship
Sailing Instructions
Instruction 9 The Courses**

The diagrams are approximate only, are not to scale, and do not override any other Instructions.



Course Designator	Course
I2	Start – 1 – 1A – 4s/4p – 1 – 2 – 3p – 5 – Finish
I3	Start – 1 – 1A – 4s/4p – 1 – 1A – 4s/4p – 1 – 2 – 3p – 5 – Finish
14	Start – 1 – 1A – 4s/4p – 1 – 1A – 4s/4p – 1 – 1A – 4s/4p – 1 – 2 – 3p – 5 – Finish
O1	Start – 1 – 2 – 3p – 5 – Finish
O2	Start – 1 – 2 – 3s/3p – 2 – 3p – 5 – Finish
O3	Start – 1 – 2 – 3s/3p – 2 – 3s/3p – 2 – 3p – 5 – Finish
O4	Start – 1 – 2 – 3s/3p – 2 – 3s/3p – 2 – 3s/3p – 2 – 3p – 5 – Finish